

Power Wirewound Resistors Ceramic case , Vertical



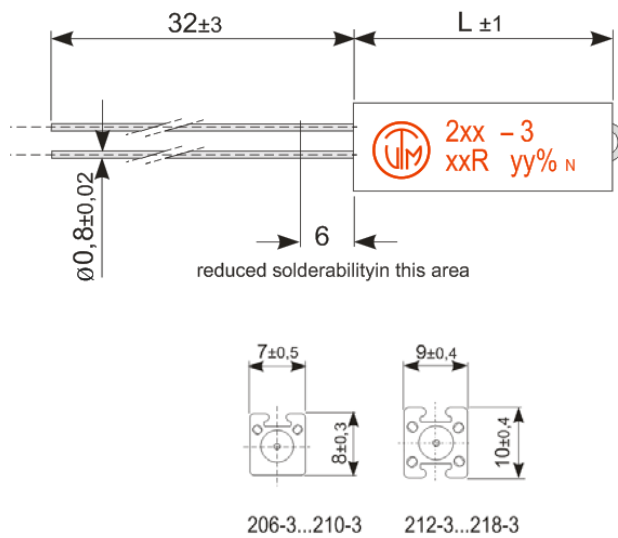
ELECTRICAL SPECIFICATIONS

Type		206-3	208-3	210-3	212-3	214-3	216-3	218-3
Nominal Power rating P_{70}	[W]	4	5	7	7	9	11	17
Resistance range	Min	*Please check the table below						
	Max	9K1	15K	33K	15K	33K	47K	82K
E-Series		E24 (5[%]), E12 (10[%])						
Tolerances	± [%]	5, 10						
Temperature coefficient	[$10^{-6} \cdot K^{-1}$]	*Depends on the value, please check the table below						
Temperature range	[°C]	-55 ... +350						
Thermal resistance	[KW^{-1}]	65	50	40	40	30	25	15
Dielectric withstanding voltage IEC115-1 clause 4.7 (1[<i>min</i>])	[V]	2000						

PERFORMANCE DATA

Max. working voltage	[V] _{RMS}	$\sqrt{P_{70} \cdot R}$
Insulation resistance <i>IEC115-1 clause 4.6</i>	[MΩ]	$> 10^4$
Derating linear		70...350 (0W)
Climatic category		55/200/21
Failure Rate <i>(Total, ϑ_p, max, 60[%] cont. lev.)</i>	[$10^{-9} h^{-1}$]	appr. 100 depends on value
Endurance <i>(P_{70} 70[°C], 1000[h]) IEC115-1 clause 4.25</i>	± [%]	3,0
Damp heat, steady state <i>(40[°C], 93[% r.h.], 56[d]) IEC115-1 clause 4.24</i>	± [%]	2,0
Climatic sequence <i>IEC115-1 clause 4.23</i>	± [%]	2,0
Terminal strength	± [%]	1,0
Terminal Tensile Strength	[N]	50
Resistance to soldering heat <i>(260[°C], 3,5[s]) IEC115-1 clause 4.12</i>	± [%]	± 0,2
Solderability <i>(245\pm3[°C] 3\pm0,3[S]) IEC 60068-2-20</i>		Solder bath method
Marking <i>IEC60062</i>		Printed in clear

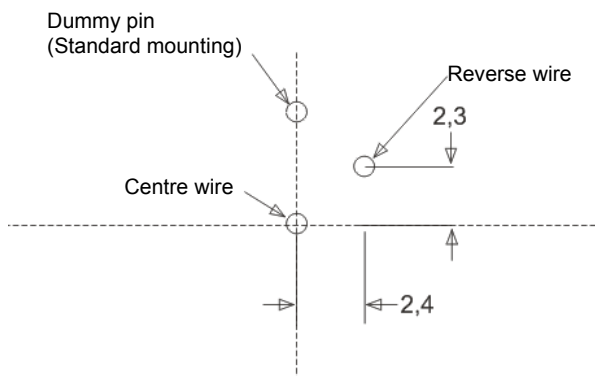
DIMENSIONS [mm]



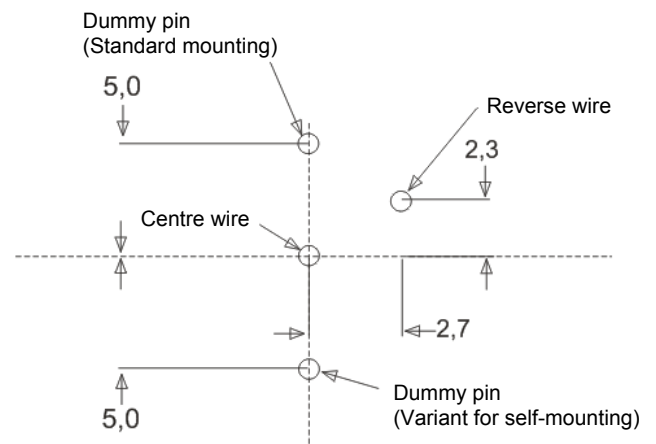
Type	L ₁
206-8	20 ±1,0
208-8	25 ±1,0
210-8	38 ±1,0
212-8	25 ±1,0
214-8	38 ±1,0
216-8	50 ±1,5
218-8	75 ±2,0

PCB – Layout for series KV

KV206...KV210



KV212...KV218



ELECTRICAL PERFORMANCE

Type	Resistance range [minimum]	
	±10%	±5%
KV206	0R056	0R1
KV208	0R075	0R15
KV210	0R11	0R33
KV212	0R075	0R15
KV214	0R11	0R33
KV216	0R15	0R51
KV218	0R27	0R91

Type	Temperature coefficient [ppm K ⁻¹]		
	TC +400 ±50	TC 0 ±40	TC 0 ±10
KV206	0R056...0R2	0R22...300R	330R...9K1
KV208	0R075...0R3	0R33...470R	510R...15K
KV210	0R11...0R68	0R75...910R	1K...33K
KV212	0R075...0R3	0R33...470R	510R...15K
KV214	0R11...0R68	0R75...910R	1K...33K
KV216	0R15...1R	1R1...1K3	1K5...47K
KV218	0R27...1R6	1R8...2K4	2K7...82K

PACKAGING

The standard packaging for KV in axial type is bulk, dimensions below.



Type	Packaging	Pieces	Pack. Code
KV206-3	Bulk	200	B
KV208-3		200	
KV210-3		200	
KV212-3		200	
KV214-3		200	
KV216-3		200	
KV218-3		100	

ORDERING EXAMPLE

KV206-3	10	B	100R
<i>Type</i>	<i>Tolerance</i>	<i>Pack-Code</i>	<i>R-Value</i>